



# **Holstein Marketplace SIREs**



712H001005 CHARISMA DAUGHTER  
SAVAGE-LEIGH CHARISMA BETTY VG-88  
Owned by: Ruben Schaapman and Austin Yoder

## **APRIL 2023**

**BULLS OFFERED BY BREEDERS, FOR BREEDERS**



## BULLS OFFERED BY BREEDERS, FOR BREEDERS

At Holstein Marketplace Sires, we know top-notch genetic programs weren't built in a day. They're the culmination of early mornings and late nights, carefully considered breeding decisions, and a healthy dose of patience and persistence.

Outstanding breeding programs are a testament to generations of families – hard-working farm families, and constantly improving cow families.

This caliber of dedication deserves recognition.

That's why we created Holstein Marketplace Sires. Through this program, the sire's breeder retains ownership and directly receives the proceeds from the sale of semen.

When you buy from Holstein Marketplace Sires, you're supporting fellow Registered Holstein breeders, and adding high-quality genetics to your herd.

*See the difference at Holstein Marketplace Sires.*



@HOLSTEIN MARKETPLACE SIRES

FOLLOW THE HOLSTEIN MARKETPLACE SIRES  
FACEBOOK PAGE FOR THE LATEST UPDATES!

# INDEX

## ALPHABETICAL INDEX

Stud Code	Short Name	Page
712HO01019	AFTERMATH	6-7
712HO01005	CHARISMA	22-23
712HO01010	CRUISIN	24-25
712HO01021	DREAMY	14-15
712HO01015	FABIO	10-11
712HO01012	HELMSMAN	26-27
712HO01020	HYPE	4-5
712HO01016	KUDOS	16-17
712HO01023	LITE IT UP-P-RED	20-21
712HO01017	NAVIGATOR	8-9
712SM02001	PRIMETIME	28-29
712HO01018	TANGO-RED	12-13
712HO01022	ZION-P	18-19

## CODE NUMBER INDEX

Stud Code	Short Name	Page
712HO01005	CHARISMA	22-23
712HO01010	CRUISIN	24-25
712HO01012	HELMSMAN	26-27
712HO01015	FABIO	10-11
712HO01017	NAVIGATOR	8-9
712HO01016	KUDOS	16-17
712HO01018	TANGO-RED	12-13
712HO01019	AFTERMATH	6-7
712HO01020	HYPE	4-5
712HO01021	DREAMY	14-15
712HO01022	ZION-P	18-19
712HO01023	LITE IT UP-P-RED	20-21
712SM02001	PRIMETIME	28-29



Scan the QR code to learn more about  
Holstein Marketplace Sires.

Cover image ©Cybil Fisher, back cover images ©Andrew Hetke. 4/23 CDCR/HA Genomic Evaluations.  
TPI is a registered trademark of Holstein Association USA. Marketplace Sires is a Division of Holstein Services, Inc.





712H001020 | GENOSOURCE GAMEDAY

# HYPE-ET

840003241471271 99%RHA aAa: 432651 A2A2 AB  
TR TP TC TL TD FREE OF ALL HAPLOTYPES IMPACTING FERTILITY



OWNED BY:



4TH DAM: SEGULL-BAY D EXTREME-ET VG-88



6th Dam: SEGULL-BAY MISS AMERICA-ET  
EX-91 GMD DOM

SIRE: RMD-DOTTERER SSI GAMEDAY-ET

DAM: GENOSOURCE POSITIVE 8442-ET VG-85

Sired By: PROGENESIS POSITIVE

2ND DAM: TJR CHARL EMERALD 41871-ET VG-87

Sired By: HURTGENLEA RICHARD CHARL-ET

2-09 3X 305d 33,310 4.7%F 1,579 3.4%P 1,116

3RD DAM: MS TJR SABRE EMBER 40011-ET VG-85

Sired By: FARNEAR TANGO SABRE 1973-ET

4TH DAM: SEAGULL-BAY D EXTREME-ET VG-88

Sired By: MR MOGUL DELTA 1427-ET

4-06 3X 354d 37,750 3.4%F 1,269 3.2%P 1,218

Lifetime 951d 102,980 3.6%F 3,693 3.1%P 3,217

## 04/23 CDCB

GTPI®	+3013	79%R
Net Merit \$	+1072	73%R

## 04/23 HAUSA

PTA Type	+1.13	78%R
Udder Composite	+1.44	
Feet & Leg Composite	+0.14	

			-3	-2	-1	1	2	3
Stature	0.20	Tall						
Strength	-0.26	Frail						
Body Depth	-0.09	Shallow						
Dairy Form	1.47	Open						
Rump Angle	0.09	Sloped						
Rump Width	0.55	Wide						
Rear Legs-Side View	0.50	Curved						
Rear Legs-Rear View	-0.15	Hock In						
Foot Angle	0.13	Steep						
Feet & Legs Score	0.28	High						
Fore Udder Attachment	1.62	Strong						
Rear Udder Height	2.08	High						
Rear Udder Width	2.25	Wide						
Udder Cleft	0.37	Strong						
Udder Depth	0.48	Shallow						
Front Teat Placement	0.99	Close						
Rear Teat Placement	0.97	Close						
Teat Length	-1.70	Short						

## HEALTH & FERTILITY

Somatic Cell Score	2.90
Productive Life	4.9
Heifer Livability	1.2
Cow Livability	1.6
Dtr Preg Rate	-0.8
Hfr Conception Rate	3.0
Cow Conception Rate	0.1
Fertility Index	0.2

## CALVING TRAITS

Sire Calving Ease	2.3%
Daughter Calving Ease	2.3%
Sire Stillbirth	6.3%
Daughter Stillbirth	4.8%
Gestation Length	0.4
Early First Calving	4.3

## PRODUCTION Dtrs: 0 | Herds: 0

Milk	1515	80%R
Fat (lbs/%)	115	0.19%
Protein (lbs/%)	61	0.05%
Feed Efficiency	304	
Feed Saved	170	
Cheese Merit \$	1083	

"HYPE is an elite sire for production and components, while having exceptional type and udders."

— Jeff Jauquet, Jauquet Holsteins Dairy, Pulaski, WI



712H001019 I K-STAR

# AFTERMATH-ET

840003237851836 99%RHA aAa: 243615 A2A2 BB  
TR TP TC TL TD FREE OF ALL HAPLOTYPES IMPACTING FERTILITY



BRED AND OWNED BY:



DAM: K-STAR RENEGADE AFFECT-ET VG-86



2nd Dam: K-STAR DELTA ANSWER VG-86

**SIRE: PEAK ALTAMAGNIFIQUE-ET**

DAM: K-STAR RENEGADE AFFECT-ET VG-86

**Sired By:** S-S-I PR RENEGADE-ET

2ND DAM: K-STAR DELTA ANSWER VG-86 GMD DOM

Sired By: MR MOGUL DELTA 1427-ET

1-11 3X 365d 33,460 5.1%F 1,701 3.6%P 1,204

3RD DAM: K-STAR FACEBOOK ANNOUNCE EX-90 GMD DOM

**Sired By:** MARBRI FACEBOOK-ET

3-03 3x 365d 46.620 4.3 %F 1.990 3.4%P 1.567

Lifetime 1,110d 133,400 4.2%F 5,634 3.3%P 4,388

4TH DAN LAGLER ADMIRAL JAMES V.

4TH DAM: LACLAR ARMSTEAD ANISE VG-86 GM  
Size / B = DIAMOND 24K ARMSTEAD 5T

Sired By: DIAMOND-OAK ARMISTEAD-ET  
6 06 3Y 36F 4 4F E30 3 F8/E 1 611 3 38/D 1 471

Lifetime = 3.333 + 3.63 870 3.4% E 8.873 3.3% D 8.348

5TH-10TH Dams VG or EX

04/23 CDCB		
GTPI®	+2994	78%R
Net Merit \$	+927	72%R

04/23 HAUSA		
PTA Type	+1.89	78%R
Udder Composite	+1.95	
Feet & Leg Composite	+0.81	

		-3	-2	-1	1	2	3
Stature	0.35	Tall					
Strength	0.41	Strong					
Body Depth	0.45	Deep					
Dairy Form	1.29	Open					
Rump Angle	0.90	Sloped					
Rump Width	0.87	Wide					
Rear Legs-Side View	1.34	Curved					
Rear Legs-Rear View	0.76	Straight					
Foot Angle	0.57	Steep					
Feet & Legs Score	0.91	High					
Fore Udder Attachment	2.15	Strong					
Rear Udder Height	2.26	High					
Rear Udder Width	2.89	Wide					
Udder Cleft	1.63	Strong					
Udder Depth	0.85	Shallow					
Front Teat Placement	2.48	Close					
Rear Teat Placement	2.50	Close					
Teat Length	-1.72	Short					

HEALTH & FERTILITY		CALVING TRAITS		PRODUCTION		
				Dtrs: 0   Herds: 0		
Somatic Cell Score	2.96	Sire Calving Ease	2.1%	Milk	835	79%R
Productive Life	4.1	Daughter Calving Ease	2.2%	Fat (lbs/%)	101	0.24%
Heifer Livability	0.8	Sire Stillbirth	6.6%	Protein (lbs/%)	55	0.1%
Cow Livability	1.3	Daughter Stillbirth	4.7%	Feed Efficiency	256	
Dtr Preg Rate	0.3	Gestation Length	0.2	Feed Saved	36	
Hfr Conception Rate	1.8	Early First Calving	3.4	Cheese Merit \$	944	
Cow Conception Rate	1.5	"The first three maternal dams behind AFTERMATH have been stars in our herd for classifying and component production."				
Fertility Index	0.9	- Dr. Kenton Meyer, Redwood Valley, CA				

*"The first three maternal dams behind AFTERMATH have been stars in our herd for classifying and component production."*

— *Dan Koester, Koester Dairy Inc., Dakota, IL*



712H001017 | BLUMENFELD

# NAVIGATOR-ET

840003232439433 99%RHA aAa: 432561 A2A2 AB  
TR TP TC TL TD FREE OF ALL HAPLOTYPES IMPACTING FERTILITY



BRED AND OWNED BY:

04/23 CDCB

GTP1®	+2908	79%R
Net Merit \$	+1020	74%R

04/23 HAUSA

PTA Type	+0.50	78%R
Udder Composite	+1.02	
Feet & Leg Composite	-0.02	

			-3	-2	-1	1	2	3
Stature	-0.30	Short						
Strength	-0.13	Frail						
Body Depth	-0.52	Shallow						
Dairy Form	-0.24	Tight						
Rump Angle	0.33	Sloped						
Rump Width	-0.64	Narrow						
Rear Legs-Side View	0.04	Curved						
Rear Legs-Rear View	-0.17	Hock In						
Foot Angle	0.04	Steep						
Feet & Legs Score	-0.07	Low						
Fore Udder Attachment	1.57	Strong						
Rear Udder Height	1.18	High						
Rear Udder Width	0.95	Wide						
Udder Cleft	-0.66	Weak						
Udder Depth	1.08	Shallow						
Front Teat Placement	0.41	Close						
Rear Teat Placement	-0.13	Wide						
Teat Length	-1.00	Short						

## HEALTH & FERTILITY

Somatic Cell Score	2.64
Productive Life	5.9
Heifer Livability	1.2
Cow Livability	4.3
Dtr Preg Rate	0.2
Hfr Conception Rate	0.2
Cow Conception Rate	0.8
Fertility Index	0.4

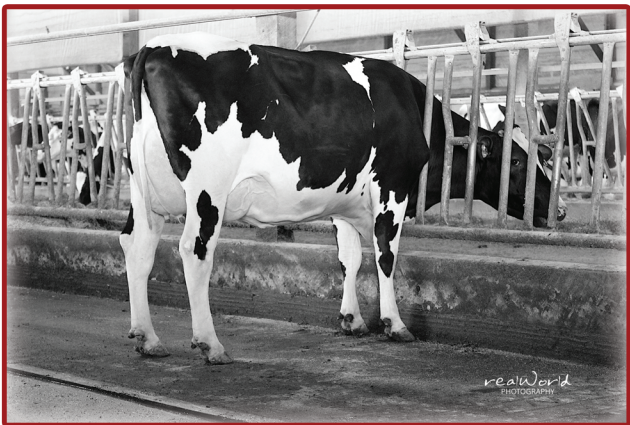
## CALVING TRAITS

Sire Calving Ease	2.1%
Daughter Calving Ease	2.3%
Sire Stillbirth	5.9%
Daughter Stillbirth	5.2%
Gestation Length	-0.6
Early First Calving	1.6

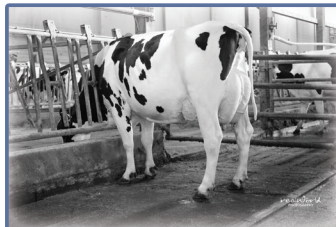
## PRODUCTION Dtrs: 0 | Herds: 0

Milk	558	80%R
Fat (lbs/%)	103	0.29%
Protein (lbs/%)	43	0.09%
Feed Efficiency	253	
Feed Saved	168	
Cheese Merit \$	1042	

"NAVIGATOR exemplifies what we breed for - huge components, extreme PL, positive fertility, great udders, and moderate frames."  
— Brian Waldner, Blumenfeld Holsteins LLC, Hawley, MN



DAM: BLUMENFELD ROME 6841-ET GP-83



SIRE: PEAK RAYSHEN-ET

DAM: BLUMENFELD ROME 6841-ET GP-83

Sired By: DE-SU FRAZZLD ROME 14192-ET  
2-00 3X 305d 25,520 4.8%F 1,229 3.5%P 885

2ND DAM: PINE-TREE 7019 ACHI 7824-ET VG-85

Sired By: ABS ACHIEVER-ET  
3-03 3x 365d 38,600 4.3%F 1,653 3.3%P 1,273

3RD DAM: PINE-TREE 9882 PROF 7019-ET VG-86 DOM

Sired By: S-S-I PARTYROCK PROFIT-ET  
2-04 3X 365d 39,160 4.1%F 1,601 3.4%P 1,312

4TH DAM: OCD SUPERSIRE 9882-ET VG-86 DOM

Sired By: SEAGULL-BAY SUPERSIRE-ET  
2-01 3X 365d 31,870 4.1%F 1,310 3.2%P 1,023

5TH-13TH Dams VG or EX

2nd Dam: PINE-TREE 7019 ACHI 7824-ET VG-85





712H001015 | SUGAR-C CAPTIVATING

# FABIO

840003138997402 99%RHA aAa: 423156 A2A2 AA  
TR TP TC TY TV TL TD FREE OF ALL HAPLOTYPES IMPACTING FERTILITY



BRED AND OWNED BY:



2ND DAM: SUGAR-C GRANITE FIREFLY-ET VG-88



3rd Dam: SUGAR-C DENVER FINALE EX-91 2E

SIRE: LARCRESS CAPTIVATING-ET

DAM: SUGAR-C CHALLENG FINESSE-ET GP-81

Sired By: SANDY-VALLEY CHALLENGER-ET

2ND DAM: SUGAR-C GRANITE FIREFLY-ET VG-88

Sired By: PROGENESIS GRANITE-ET

4-04 3X 311d 33,760 4.2%F 1,425 3.2%P 1,090

3RD DAM: SUGAR-C DENVER FINALE EX-91 2E

Sired By: MR MOGUL DENVER 1426-ET

5-08 3X 365d 51,290 2.9%F 1,467 3.1%P 1,588

Lifetime: 1,599d 194,130 3.0%F 5,784 3.2%P 6,148

4TH DAM: SUGAR-C MCC FAITH-ET EX-90 2E GMD

Sired By: DE-SU BKM MCCUTCHEN 1174-ET

3-01 3X 365d 39,690 3.0%F 1,208 3.3%P 1,309

Lifetime: 2,087d 212,190 3.7%F 7,776 3.2%P 6,815

6TH-11TH Dams VG or EX

## 04/23 CDCB

GTPI®	+2867	79%R
Net Merit \$	+808	73%R

## 04/23 HAUSA

PTA Type	+1.53	78%R
Udder Composite	+1.33	
Feet & Leg Composite	+0.16	

			-3	-2	-1	1	2	3
Stature	1.88	Tall						
Strength	0.72	Strong						
Body Depth	1.04	Deep						
Dairy Form	2.04	Open						
Rump Angle	0.32	Sloped						
Rump Width	1.46	Wide						
Rear Legs-Side View	1.10	Curved						
Rear Legs-Rear View	0.48	Straight						
Foot Angle	0.57	Steep						
Feet & Legs Score	0.60	High						
Fore Udder Attachment	1.20	Strong						
Rear Udder Height	2.48	High						
Rear Udder Width	2.29	Wide						
Udder Cleft	1.30	Strong						
Udder Depth	0.77	Shallow						
Front Teat Placement	1.02	Close						
Rear Teat Placement	1.30	Close						
Teat Length	0.37	Long						

## HEALTH & FERTILITY

Somatic Cell Score	2.94
Productive Life	2.5
Heifer Livability	0.7
Cow Livability	0.8
Dtr Preg Rate	-0.8
Hfr Conception Rate	0.5
Cow Conception Rate	-0.5
Fertility Index	-0.1

## CALVING TRAITS

Sire Calving Ease	2.2%
Daughter Calving Ease	1.9%
Sire Stillbirth	5.8%
Daughter Stillbirth	4.3%
Gestation Length	-2.0
Early First Calving	4.4

## PRODUCTION Dtrs: 0 | Herds: 0

Milk	1447	80%R
Fat (lbs/%)	93	0.13%
Protein (lbs/%)	60	0.05%
Feed Efficiency	240	
Feed Saved	-79	
Cheese Merit \$	819	

"The productive life of FABIO's family is tremendous. It doesn't miss, they're high performing, and they're consistent and easy on the eyes."

— Rick Adams, Sugar Creek Dairy, Elkhorn, WI





712H001018 | GOLDEN-OAKS

# TANGO-RED-ET

840003209185764 99%RHA aAa: 234165 A2A2 AA  
TC TV TY TL TD FREE OF ALL HAPLOTYPES IMPACTING FERTILITY



BRED AND OWNED BY: Registered Holsteins



DAM'S MATERNAL SISTER: GOLDEN-OAKS TEMPTRES-RED-ET VG-88  
2ND SR 2 YR OLD INTERNATIONAL R&W SHOW 2022



DAM'S FULL SISTER:  
GOLDEN-OAKS TRINITY-RED-ET EX-91



2nd Dam: MISS POTTSDALE DFI TANG-RED EX-94  
ALL-AMERICAN R&W SR 3Y OLD COW 2017  
RES. ALL-AMERICAN R&W SR 2YR OLD 2016

SIRE: FARNEAR ALTITUDE-RED-ET

DAM: GOLDEN-OAKS TEASE-RED-ET VG-86

Sired By: CYCLE MCGUCCI JORDY-RED  
2-03 3x 365d 27,080 4.5%F 1,206 3.2%P 869

2ND DAM: MISS POTTSDALE DFI TANG-RED EX-94

Sired By: SCIENTIFIC B DEFIANT-ET  
5-00 3X 365d 38,670 4.0%F 1,561 3.0%P 1,143  
Lifetime 1,378d 126,370 4.3%F 5,404 3.2%F 4,031

3RD DAM: AL-N-TINE DEBONAIR TART-ET EX-92 3E

Sired By: SCIENTIFIC DEBONAIR-RED-ETS  
5-01 2X 365d 30,120 4.2%F 1,262 3.4%P 1,020  
Lifetime 1,985d 138,130 4.4%F 6,137 3.4%P 4,722

4TH DAM: AL-N-TINE ADVENT TRISCUIT EX-91 2E

Sired By: KHW KITE ADVENT-RED-ET  
6-09 3X 305d 29,150 4.4%F 1,289 3.3%P 965  
1ST SR 3YR OLD MID EAST FALL NATIONAL 2010  
5TH-8TH Dams VG or EX

04/23 CDCB

GTP1®	+2249	81%R
Net Merit \$	-85	75%R

04/23 HAUSA

PTA Type	+4.22	80%R
Udder Composite	+3.06	
Feet & Leg Composite	+1.95	

			-3	-2	-1	1	2	3
Stature	4.95	Tall						
Strength	2.26	Strong						
Body Depth	2.87	Deep						
Dairy Form	2.66	Open						
Rump Angle	-0.10	HighPins						
Rump Width	2.92	Wide						
Rear Legs-Side View	0.82	Curved						
Rear Legs-Rear View	3.01	Straight						
Foot Angle	2.97	Steep						
Feet & Legs Score	2.81	High						
Fore Udder Attachment	4.01	Strong						
Rear Udder Height	5.19	High						
Rear Udder Width	4.49	Wide						
Udder Cleft	2.55	Strong						
Udder Depth	3.30	Shallow						
Front Teat Placement	1.86	Close						
Rear Teat Placement	2.13	Close						
Teat Length	0.78	Long						

## HEALTH & FERTILITY

Somatic Cell Score	2.97
Productive Life	-0.9
Heifer Livability	1.0
Cow Livability	-6.6
Dtr Preg Rate	-2.6
Hfr Conception Rate	-0.1
Cow Conception Rate	-4.0
Fertility Index	-2.9

## CALVING TRAITS

Sire Calving Ease	3.8%
Daughter Calving Ease	3.4%
Sire Stillbirth	7.0%
Daughter Stillbirth	5.9%
Gestation Length	2.6
Early First Calving	-6.5

## PRODUCTION Dtrs: 0 | Herds: 0

Milk	-425	82%R
Fat (lbs/%)	30	0.17%
Protein (lbs/%)	0	0.05%
Feed Efficiency	3	
Feed Saved	-389	
Cheese Merit \$	-77	

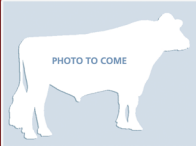
"TANGO is true to our breeding program with his breed-leading type numbers, combined with his style and physical makeup."  
— Lucas Moser, Golden Oaks Farm, Wauconda, IL

712H001021 | KINGS-RANSOM H

**DREAMY**-ET840003236793974 99%RHA aAa:231465 A1A2 AA  
TR TP TC TY TV TL TD FREE OF ALL HAPLOTYPES IMPACTING FERTILITY

**KINGS  
RANSOM FARM LLC.**

BRED AND OWNED BY:



DAM: KINGS-RANSOM CASP DAZE-ET EX-94

SIRE: AOT HOOSICK-ET

DAM: KINGS-RANSOM CASP DAZE-ET EX-94

Sired By: CLAYNOOK CASPER-ET

3-01 3X 365d 43,310 4.0%F 1,722 3.5%P 1,501

2ND DAM: KINGS-RANSOM DELTA DESTINY EX-92 DOM

Sired By: MR MOGUL DELTA 1427-ET

2-00 3X 365d 35,850 4.0%F 1,448 3.4%P 1,231

3RD DAM: KINGS-RANSOM DM DEBONAIR-ET EX-94 2E DOM

Sired By: VAL-BISSON DOORMAN-ET

5-03 3X 365d 33,460 4.9%F 1,646 3.1%P 1,028

Lifetime 1,850d 145,840 4.6%F 6,690 3.3%P 4,802

4TH DAM: KINGS-RANSOM DORC DEXTRA-ET EX-94 2E DOM

Sired By: COYNE-FARMS DORCY-ET

4-08 3X 365d 40,270 3.7%F 1,492 3.1%P 1,236

Lifetime 1,788d 168,750 4.0%F 6,670 3.1%P 5,250

5TH-12TH Dams VG or EX

## 04/23 CDCB

GTP1®	+2776	79%R
Net Merit \$	+565	73%R

## 04/23 HAUSA

PTA Type	+3.57	79%R
Udder Composite	+3.30	
Feet & Leg Composite	+1.20	

			-3	-2	-1	1	2	3
Stature	2.59	Tall						
Strength	1.19	Strong						
Body Depth	1.60	Deep						
Dairy Form	2.08	Open						
Rump Angle	-0.39	HighPins						
Rump Width	1.86	Wide						
Rear Legs-Side View	-0.12	Straight						
Rear Legs-Rear View	0.92	Straight						
Foot Angle	2.11	Steep						
Feet & Legs Score	1.83	High						
Fore Udder Attachment	4.10	Strong						
Rear Udder Height	4.62	High						
Rear Udder Width	4.03	Wide						
Udder Cleft	2.47	Strong						
Udder Depth	3.08	Shallow						
Front Teat Placement	2.19	Close						
Rear Teat Placement	2.33	Close						
Teat Length	-1.12	Short						

## HEALTH &amp; FERTILITY

Somatic Cell Score	2.82
Productive Life	3.1
Heifer Livability	0.8
Cow Livability	-1.5
Dtr Preg Rate	-0.4
Hfr Conception Rate	1.0
Cow Conception Rate	0.8
Fertility Index	0.1

## CALVING TRAITS

Sire Calving Ease	2.1%
Daughter Calving Ease	2.1%
Sire Stillbirth	5.9%
Daughter Stillbirth	6.3%
Gestation Length	-0.6
Early First Calving	1.6

## PRODUCTION Dtrs: 0 | Herds: 0

Milk	503	80%R
Fat (lbs/%)	49	0.1%
Protein (lbs/%)	38	0.08%
Feed Efficiency	140	
Feed Saved	-23	
Cheese Merit \$	581	

"For those searching for high type, DREAMY will be able to make tremendous udders with a balanced frame and good feet and legs."  
— Jeff King, Kings-Ransom Farm LLC, Schuylerville, NY



712H001016 | SYNERGY  
**KUDOS-ET**

840003241471267 99%RHA aAa: 324156 A1A2 AE  
TR TP TC TL TD FREE OF ALL HAPLOTYPES IMPACTING FERTILITY



BRED AND OWNED BY:

**04/23 CDCB**

GTPI®	+2819	78%R
Net Merit \$	+599	73%R

**04/23 HAUSA**

PTA Type	+3.09	78%R
Udder Composite	+2.77	
Feet & Leg Composite	+1.76	

			-3	-2	-1	1	2	3
Stature	2.52	Tall						
Strength	1.33	Strong						
Body Depth	1.50	Deep						
Dairy Form	2.25	Open						
Rump Angle	-0.06	High Pins						
Rump Width	2.11	Wide						
Rear Legs-Side View	0.37	Curved						
Rear Legs-Rear View	1.88	Straight						
Foot Angle	2.59	Steep						
Feet & Legs Score	2.21	High						
Fore Udder Attachment	3.52	Strong						
Rear Udder Height	3.99	High						
Rear Udder Width	3.93	Wide						
Udder Cleft	1.90	Strong						
Udder Depth	2.29	Shallow						
Front Teat Placement	2.42	Close						
Rear Teat Placement	2.35	Close						
Teat Length	-1.39	Short						

**HEALTH & FERTILITY**

Somatic Cell Score	2.86
Productive Life	3.3
Heifer Livability	0.4
Cow Livability	-0.4
Dtr Preg Rate	0.1
Hfr Conception Rate	0.5
Cow Conception Rate	0.2
Fertility Index	0.0

**CALVING TRAITS**

Sire Calving Ease	1.9%
Daughter Calving Ease	1.9%
Sire Stillbirth	6.5%
Daughter Stillbirth	6.6%
Gestation Length	-1.4
Early First Calving	-1.0

**PRODUCTION** Dtrs: 0 | Herds: 0

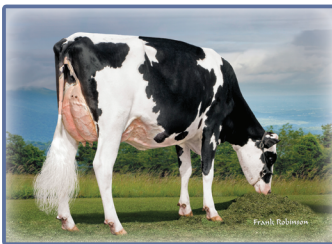
Milk	814	79%R
Fat (lbs/%)	74	0.15%
Protein (lbs/%)	38	0.04%
Feed Efficiency	154	
Feed Saved	-248	
Cheese Merit \$	609	

"KUDOS is a high-type, high udder composite bull that still has a fair amount of milk, positive DPR and positive productive life."

—Jay Jauquet, Synergy Dairy, Pulaski, WI



DAM: CALORI-D CRS KINGDOC DABBLE VG-88



3rd Dam: CALORI-D CRS CMNDR DONNA-ET VG-88

**SIRE: SIEMERS HANLEY-ET**

DAM: CALORI-D CRS KINGDOC DABBLE VG-88

Sired By: WOODCREST KING DOC

2-02 3X 365d 38,180 3.3%F 1,247 3.2%P 1,236

2ND DAM: CALORI-D CRS DABBLE-ET EX-90

Sired By: OCD 1STCLASS CALLEN-ET

4-0 3X 365d 38,860 3.6%F 1,410 3.4%P 1,330

3RD DAM: CALORI-D CRS CMNDR DONNA-ET VG-88

Sired By: LARCREST COMMANDER-ET

3-01 3X 365d 35,980 3.7%F 1,331 3.4%P 1,225

4TH DAM: MS DONALYNN DONALDA-ET VG-86 DOM

Sired By: DE-SU ALTABANFF-ET

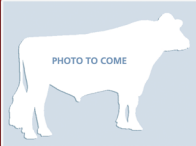
2-11 2X 365d 31,680 3.8%F 1,210 3.4%P 1,074

5TH-10TH Dams VG or EX

712H001022 | ESKDALE

**ZION-P**8400032310003II 99%RHA aAa:261435 A2A2 AA  
TR PC TC TL TD FREE OF ALL HAPLOTYPES IMPACTING FERTILITY

BRED AND OWNED BY:

**EskDale Dairy**  
"Rivers of milk in the desert"

DAM: MS AIJA MIRAND MYLAND-ET VG-86

2nd Dam: AIJA KING-DOC WICHITA-ET  
VG-88 CAN

SIRE: AOT HOOSICK-ET

DAM: MS AIJA MIRAND MYLAND-ET VG-86

Sired By: COOMBOONA ZIPIT MIRAND-IMP-ET

2-01 2x 305d 24,440 4.0%F 968 3.2%P 776

2ND DAM: AIJA KING-DOC WICHITA-ET VG-88 CAN

Sired By: WOODCREST KING DOC

3-08 2x 365d 36,532 4.1%F 1,488 3.3%P 1,221 CAN

3RD DAM: WESTCOAST COMAND WISCONSIN-ET VG-86 CAN

Sired By: LARCREST COMMANDER-ET

2-00 2x 300d 24,996 4.3%F 1,085 3.4%P 848 CAN

4TH DAM: VIEW-HOME DRMAN WSCONSIN-ET VG-88 CAN

Sired By: VAL-BISSON DOORMAN-ET

2-02 2x 365d 27,070 4.3%F 1,151 3.6%P 963 CAN

6TH-13TH Dams VG &amp; EX

04/23 CDCB

GTP1®	+2650	78%R
Net Merit \$	+453	73%R

04/23 HAUSA

PTA Type	+3.34	78%R
Udder Composite	+2.53	
Feet & Leg Composite	+0.92	

			-3	-2	-1	1	2	3
Stature	3.44	Tall						
Strength	1.45	Strong						
Body Depth	2.45	Deep						
Dairy Form	3.54	Open						
Rump Angle	-0.10	High Pins						
Rump Width	2.07	Wide						
Rear Legs-Side View	1.14	Curved						
Rear Legs-Rear View	1.01	Straight						
Foot Angle	1.78	Steep						
Feet & Legs Score	1.76	High						
Fore Udder Attachment	3.37	Strong						
Rear Udder Height	3.91	High						
Rear Udder Width	3.90	Wide						
Udder Cleft	1.66	Strong						
Udder Depth	2.31	Shallow						
Front Teat Placement	1.50	Close						
Rear Teat Placement	1.54	Close						
Teat Length	-0.15	Short						

## HEALTH &amp; FERTILITY

Somatic Cell Score	2.92
Productive Life	2.5
Heifer Livability	0.8
Cow Livability	-2.3
Dtr Preg Rate	-0.2
Hfr Conception Rate	1.0
Cow Conception Rate	0.5
Fertility Index	0.2

## CALVING TRAITS

Sire Calving Ease	2.2%
Daughter Calving Ease	2.5%
Sire Stillbirth	6.3%
Daughter Stillbirth	6.9%
Gestation Length	-1.3
Early First Calving	1.6

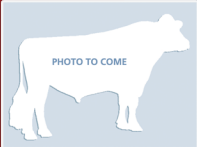
## PRODUCTION Dtrs: 0 | Herds: 0

Milk	868	79%R
Fat (lbs/%)	47	0.05%
Protein (lbs/%)	36	0.03%
Feed Efficiency	123	
Feed Saved	-121	
Cheese Merit \$	460	

"ZION-P combines pedigree, show type and balance of production and conformation, with sound health traits, and the bonus of being polled."

— John Conrad, EskDale Dairy, Eskdale, UT





712H001023 | ESKDALE

# LITE IT UP-P-RED-ET

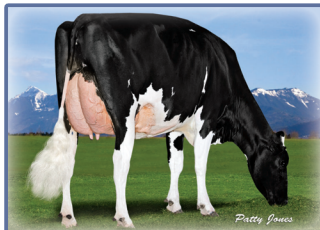
84000321429574 99%RHA-1 A1A2 BB  
PC TC TL TD FREE OF ALL HAPLOTYPES IMPACTING FERTILITY



OWNED BY: **Don Averill Jr.**



DAM: MS AIJA MIRAND MANDY-ET VG-85



3rd Dam: WESTCOAST COMAND  
WISCONSIN-ET VG-86 CAN

SIRE: VOGUE NIPIT-PP-ET

DAM: MS AIJA MIRAND MANDY-ET VG-85

Sired By: COOMBOONA ZIPIT MIRAND-IMP-ET

2ND DAM: AIJA KING-DOC WICHITA-ET VG-88 CAN

Sired By: WOODCREST KING DOC

3-08 2x 365d 36,532 4.1%F 1,488 3.3%P 1,221 CAN

3RD DAM: WESTCOAST COMAND WISCONSIN-ET VG-86 CAN

Sired By: LARCREST COMMANDER-ET

2-00 2x 300d 24,996 4.3%F 1,085 3.4%P 848 CAN

4TH DAM: VIEW-HOME DRMAN WSCONSIN-ET VG-88 CAN

Sired By: VAL-BISSON DOORMAN-ET

2-02 2x 365d 27,070 4.3%F 1,151 3.6%P 963 CAN

6TH-13TH Dams VG & EX

04/23 CDCB

GTP1®	+2610	78%R
Net Merit \$	+390	72%R

04/23 HAUSA

PTA Type	+3.22	78%R
Udder Composite	+2.64	
Feet & Leg Composite	+1.57	

			-3	-2	-1	1	2	3
Stature	3.33	Tall						
Strength	1.30	Strong						
Body Depth	1.88	Deep						
Dairy Form	2.30	Open						
Rump Angle	-0.56	HighPins						
Rump Width	2.15	Wide						
Rear Legs-Side View	0.50	Curved						
Rear Legs-Rear View	1.80	Straight						
Foot Angle	2.02	Steep						
Feet & Legs Score	2.27	High						
Fore Udder Attachment	3.69	Strong						
Rear Udder Height	3.69	High						
Rear Udder Width	3.23	Wide						
Udder Cleft	1.67	Strong						
Udder Depth	3.56	Shallow						
Front Teat Placement	0.68	Close						
Rear Teat Placement	0.86	Close						
Teat Length	0.58	Long						

## HEALTH & FERTILITY

Somatic Cell Score	2.96
Productive Life	2.0
Heifer Livability	0.5
Cow Livability	-1.4
Dtr Preg Rate	-0.9
Hfr Conception Rate	0.0
Cow Conception Rate	-0.8
Fertility Index	-0.9

## CALVING TRAITS

Sire Calving Ease	3.1%
Daughter Calving Ease	3.1%
Sire Stillbirth	7.1%
Daughter Stillbirth	5.2%
Gestation Length	0.5
Early First Calving	-1.6

## PRODUCTION Dtrs: 0 | Herds: 0

Milk	463	79%R
Fat (lbs/%)	42	0.08%
Protein (lbs/%)	37	0.08%
Feed Efficiency	106	
Feed Saved	-215	
Cheese Merit \$	404	

"LITE IT UP is exactly what I like in breeding, a unique sire stack and he's a true outlier for type. He's also a balanced bull, red and polled."

— Don Averill Jr., Tillamook, OR



# 712H001005 | OUR-FAVORITE CHARISMA-ET EX-90

840003146864329 99%RHA aAa: 234165 A2A2 BB  
TR TP TC TY TV TL TD FREE OF ALL HAPLOTYPES IMPACTING FERTILITY



BRED AND OWNED BY: ★ Home of the Melvin Cow Family

## 04/23 CDCB

GTP1®	+2612	86%R
Net Merit \$	+422	80%R

## 04/23 HAUSA

Dtrs: 10 | Herds: 9

PTA Type	+3.23	84%R
Udder Composite	+2.22	
Feet & Leg Composite	+1.74	

			-3	-2	-1	1	2	3
Stature	3.12	Tall						
Strength	1.41	Strong						
Body Depth	2.27	Deep						
Dairy Form	3.73	Open						
Rump Angle	-1.66	HighPins						
Rump Width	1.61	Wide						
Rear Legs-Side View	1.38	Curved						
Rear Legs-Rear View	1.85	Straight						
Foot Angle	2.57	Steep						
Feet & Legs Score	2.42	High						
Fore Udder Attachment	2.62	Strong						
Rear Udder Height	3.53	High						
Rear Udder Width	3.92	Wide						
Udder Cleft	2.21	Strong						
Udder Depth	1.51	Shallow						
Front Teat Placement	1.39	Close						
Rear Teat Placement	2.21	Close						
Teat Length	-0.27	Short						

## HEALTH & FERTILITY

Somatic Cell Score	3.15
Productive Life	1.6
Heifer Livability	0.8
Cow Livability	-1.8
Dtr Preg Rate	-2.0
Hfr Conception Rate	1.4
Cow Conception Rate	-1.3
Fertility Index	-1.2

## CALVING TRAITS

Sire Calving Ease	3.2%
Daughter Calving Ease	2.9%
Sire Stillbirth	7.0%
Daughter Stillbirth	7.2%
Gestation Length	0.6
Early First Calving	1.6

## PRODUCTION Dtrs: 33 | Herds: 25

Milk	842	88%R
Fat (lbs/%)	59	0.09%
Protein (lbs/%)	38	0.04%
Feed Efficiency	142	
Feed Saved	-142	
Cheese Merit \$	426	

"CHARISMA is an all-around bull with high type that should fit into a lot of breeding programs."  
— Todd Stane, Our-Favorite Holsteins, Fall Creek, WI



## DAUGHTER: SAVAGE-LEIGH CHARISMA BETTY VG-88 2-04

Owned by: Ruben Schaapman and Austin Yoder  
3rd All-National Showcase Summer Junior 2 Year Old 2022

## SIRE: WOODCREST KING DOC EX-90

## DAM: OUR-FAVORITE COMPELLING-ET VG-88

Sired By: COOKIECUTTER HANG-TIME-ET  
1-11 2X 365d 27,580 5.0%F 1,389 3.7%P 1,019

## 2ND DAM: OUR-FAVORITE UNLIMITED EX-94 3E

Sired By: MAPLE-DOWNS-I G W ATWOOD-ET  
8-01 2X 365d 34,020 4.5%F 1,539 3.5%P 1,190  
Lifetime: 2,206d 181,200 4.7%F 8,431 3.6%P 6,537

## 3RD DAM: OUR-FAVORITE OBVIOUS-ET EX-93 2E

Sired By: PICSTON SHUTTLE-ET  
6-05 2X 365d 38,110 4.2%F 1,608 3.2%P 1,208  
Lifetime: 1,952d 178,630 4.3%F 7,684 3.4%P 6,107  
4TH-10TH Dams VG or EX



Dam: Our-Favorite Compelling-ET VG-88



712H001010 | KINGS-RANSOM C

# CRUISIN-ET VG-87

840003205611061 99%RHA aAa: 243156 A2A2 AB  
TR TP TC TY TV TL TD FREE OF ALL HAPLOTYPES IMPACTING FERTILITY



BRED AND OWNED BY:

**KINGS**  
**RANSOM FARM LLC.**



DAM: KINGS-RANSOM MONTEREY CLASH EX-94



2nd Dam: KINGS-RANSOM MOGUL CLEO-ET EX-95 2E DOM

SIRE: OH-RIVER-SYC CRUSHABULL-ET

DAM: KINGS-RANSOM MONTEREY CLASH EX-94

Sired By: VIEW-HOME MONTEREY-ET

3-01 3X 305d 29,670 4.0%F 1,193 3.1%P 928

2ND DAM: KINGS-RANSOM MOGUL CLEO-ET EX-95 2E DOM

Sired By: MOUNTFIELD SSI DCY MOGUL-ET

5-09 3X 365d 36,350 4.7%F 1,698 3.3%P 1,199

Lifetime 1,743d 153,350 4.6%F 7,029 3.3%P 5,098

3RD DAM: GOLDEN-OAKS GWYN CLASSY-ET EX-92

Sired By: BRAEDALE GOLDWYN

3-05 3X 365d 37,110 4.0%F 1,498 3.3%P 1,211

4TH DAM: GOLDEN-OAKS CHAMP RAE-ET EX-93 3E

Sired By: CALBRETT-I-H H CHAMPION-ET

6-04 3X 365d 41,590 4.1%F 1,714 3.0%P 1,240

Lifetime 1,455d 134,060 4.4%F 5,884 3.2%P 4,269

5TH-12TH Dams VG or EX

## 04/23 CDCB

GTP1®	+2263	81%R
Net Merit \$	+90	76%R

## 04/23 HAUSA

PTA Type	+3.04	81%R
Udder Composite	+2.74	
Feet & Leg Composite	+1.21	

			-3	-2	-1	1	2	3
Stature	2.56	Tall						
Strength	0.68	Strong						
Body Depth	1.31	Deep						
Dairy Form	2.41	Open						
Rump Angle	0.72	Sloped						
Rump Width	1.78	Wide						
Rear Legs-Side View	1.00	Curved						
Rear Legs-Rear View	1.06	Straight						
Foot Angle	1.07	Steep						
Feet & Legs Score	1.90	High						
Fore Udder Attachment	3.67	Strong						
Rear Udder Height	3.70	High						
Rear Udder Width	3.29	Wide						
Udder Cleft	2.16	Strong						
Udder Depth	2.84	Shallow						
Front Teat Placement	2.44	Close						
Rear Teat Placement	2.43	Close						
Teat Length	-1.20	Short						

## HEALTH & FERTILITY

Somatic Cell Score	2.91
Productive Life	1.4
Heifer Livability	0.9
Cow Livability	-3.6
Dtr Preg Rate	-1.5
Hfr Conception Rate	0.8
Cow Conception Rate	-1.6
Fertility Index	-1.2

## CALVING TRAITS

Sire Calving Ease	2.7%
Daughter Calving Ease	2.2%
Sire Stillbirth	7.1%
Daughter Stillbirth	6.0%
Gestation Length	-0.5
Early First Calving	-0.6

## PRODUCTION Dtrs: 0 | Herds: 0

Milk	252	82%R
Fat (lbs/%)	0	-0.03%
Protein (lbs/%)	11	0.01%
Feed Efficiency	12	
Feed Saved	-65	
Cheese Merit \$	94	

"We believe CRUISIN checks a lot of boxes for breeders looking for modern day type and performance from a tremendous maternal line."  
— Jeff King, Kings-Ransom Farm LLC, Schuylerville, NY





712H001012 | COOKIECUTTER D

# HELMSMAN-ET \*RC

840003200122821 99%RHA aAa: 231465 A1A2 AE  
RC CV TP TC TY TL TD FREE OF ALL HAPLOTYPES IMPACTING FERTILITY



BRED AND OWNED BY:



2ND DAM: COOKIECUTTER MAC HALMACI-ET EX-94 2E



3rd Dam: COOKIECUTTER MOM HALO-ET VG-88 DOM

SIRE: CLAYNOOK DISCJOCKEY-ET

DAM: COOKIECUTTER AVLNC HAYVA-ET VG-85

Sired By: DYMENTHOLM MR APP AVALANCHE-TW  
2-03 3X 365d 30,010 4.0%F 1,212 3.3%P 987

2ND DAM: COOKIECUTTER MAC HALMACI-ET EX-94 2E DOM

Sired By: COYNE-FARMS SROCK MACK-ET

5-11 3X 348d 37,630 4.8%F 1,815 3.2%P 1,221  
Lifetime 1,651d 173,900 4.5%F 7,827 3.3%P 5,660

3RD DAM: COOKIECUTTER MOM HALO-ET VG-88 DOM

Sired By: LONG-LANGS OMAN OMAN-ET

2-00 3X 365d 35,280 5.2%F 1,819 3.5%P 1,237

4TH DAM: COOKIECUTTER GLD HOLLER-ET VG-88 DOM

Sired By: BRAEDALE GOLDWYN

2-03 3X 365d 40,730 3.5%F 1,410 2.9%P 1,172

6TH-10TH Dams VG or EX

04/23 CDCB

GTPI®	+2217	81%R
Net Merit \$	-40	75%R

04/23 HAUSA

PTA Type	+2.96	81%R
Udder Composite	+2.46	
Feet & Leg Composite	+0.23	

			-3	-2	-1	1	2	3
Stature	3.88	Tall						
Strength	2.08	Strong						
Body Depth	2.16	Deep						
Dairy Form	1.73	Open						
Rump Angle	0.23	Sloped						
Rump Width	2.39	Wide						
Rear Legs-Side View	-1.04	Straight						
Rear Legs-Rear View	1.42	Straight						
Foot Angle	2.03	Steep						
Feet & Legs Score	0.88	High						
Fore Udder Attachment	3.14	Strong						
Rear Udder Height	4.15	High						
Rear Udder Width	3.13	Wide						
Udder Cleft	1.93	Strong						
Udder Depth	3.15	Shallow						
Front Teat Placement	0.80	Close						
Rear Teat Placement	1.22	Close						
Teat Length	0.30	Long						

## HEALTH & FERTILITY

Somatic Cell Score	3.03
Productive Life	-0.5
Heifer Livability	1.1
Cow Livability	-4.0
Dtr Preg Rate	-2.0
Hfr Conception Rate	-1.8
Cow Conception Rate	-2.9
Fertility Index	-2.0

## CALVING TRAITS

Sire Calving Ease	3.1%
Daughter Calving Ease	2.7%
Sire Stillbirth	6.7%
Daughter Stillbirth	6.5%
Gestation Length	0.3
Early First Calving	-1.3

## PRODUCTION Dtrs: 0 | Herds: 0

Milk	26	82%R
Fat (lbs/%)	23	0.08%
Protein (lbs/%)	12	0.04%
Feed Efficiency	1	
Feed Saved	-503	
Cheese Merit \$	-35	

"HELMSMAN is a high PTAT red carrier from the famous Cookiecutter MOM Halo family, tracing back to Snow-N-Denises Dellia!"  
— Cookiecutter Holsteins, LLC, Hudson Falls, NY





712SM02001 | IR

# PRIMETIME

ASA# 3861405 SIMANGUS 1/2 SM 1/2 AN  
HOMOZYGOUS BLACK HOMOZYGOUS POLLED DOB:1/1/21



BRED AND OWNED BY:  
IRVINE RANCH AND  
NICKERSON SIMMENTAL



## TOP 1% MARBLING

## TOP 3% RIBEYE AREA

## TOP 4% CALVING EASE

	CALVING EASE (CE)	BIRTH WEIGHT	WEAN WEIGHT	YEARLING WEIGHT	AVERAGE DAILY GAIN	MATERNAL CE
EPD	18.4	-3.6	76.6	127.9	0.32	11.9
ACC	0.44	0.45	0.45	0.46	0.46	0.25
%	4	5	50	30	20	2

	MILK	MATURE-WEIGHT	STAYABILITY	DOCILITY	CARCASS WEIGHT	YIELD GRADE
EPD	21.9	60.1	10.8	16.7	41.8	-0.31
ACC	0.18	0.26	0.30	0.44	0.44	0.36
%	65	50	90	10	25	25

	CARCASS MARBLING	CARCASS FAT	RIBEYE AREA	ALL PURPOSE INDEX	TERMINAL INDEX	PRIMETIME'S GENOMIC INFORMATION
EPD	1.11	-0.040	1.09	182.8	104.5	04/05/23
ACC	0.42	0.39	0.42			
%	1	65	4	2	1	

### HOLSIM - THE PRIME CHOICE FOR YOUR BEEF ON HOLSTEIN BREEDING PROGRAM

- HOLSim sires are **SimAngus** bulls that are most complementary to Holstein females.
- SimAngus bulls combine the strengths of two breeds (Simmental and Angus), giving them an economic advantage and making them the sought-after breed for beef on Holstein breeding programs.
- All HOLSim bulls are homozygous black and homozygous polled.
- Only elite bulls ranking in the top 98th percentile of the profit and science-based HOLSim Index, like IR-PRIMETIME, are eligible to sire HOLSim calves.



DAM: KBHR IR/JLN ASTORIA G119 | REG: 3618738

SIRE: G A R HOMETOWN  
G A R ASHLAND x CHAIR ROCK SURE FIRE 6095

DAM: KBHR IR/JLN ASTORIA G119  
KBHR HIGH ROAD E283 x BAR CK MS X38 106Z

"PRIMETIME represents an unparalleled opportunity to add efficiency, muscling, and marbling to every HOLSim calf he sires. Whether selling day-old beef on Holstein calves or feeding them through harvest, PRIMETIME's genetics are designed to enhance marketability and profitability."  
—John Irvine, Irvine Ranch, Manhattan, KS



Sire: G A R HOMETOWN | REG: 19266718

## SEE THE DIFFERENCE AT HOLSTEIN MARKETPLACE SIRES

Holstein Marketplace Sires provides a unique avenue for Holstein breeders to market their genetics. Under this program, bull owners retain ownership of the bulls, and Holstein Marketplace Sires coordinates marketing and sales of the bulls' semen. Through this program, the sire's breeder retains ownership and directly receives the proceeds from the sale of semen.

Launched in January of 2019, this program provides a new choice of bulls offered by breeders, for breeders. The program's goal is to create more opportunities for Holstein breeders to market semen to fellow breeders.

Holstein Marketplace Sires offers something for everyone, including niche-market bulls backed by deep pedigrees. The program also provides a space for breeders to develop generations of bulls, free from restrictive contracts.

Contact Holstein Marketplace Sires Manager Tim Ziemba with interest about placing a bull in the Holstein Marketplace Sires program, or with additional questions.

### HOLSTEIN MARKETPLACE SIRES MANAGER-TIM ZIEMBA

TIM CELL: 315.730.3312 | TZIEMBA@HOLSTEIN.COM | CUSTOMER SERVICE: 800.952.5200

### ORDER ONLINE OR THROUGH YOUR REGIONAL SALES REPRESENTATIVE

Holstein Association USA Regional Sales Representatives are on the road with Holstein Marketplace Sires semen or you can order online at [www.holsteinusa.com/marketplacesires](http://www.holsteinusa.com/marketplacesires). Click the red "Buy now" button, fill in the number of units you want to purchase, and check out using our secure online system. Holstein Marketplace Sires semen will be shipped to your door.

## MEET THE BREEDERS BEHIND THE BULLS



**TODD STANEK**  
OUR-FAVORITE CHARISMA-ET



**BRIAN WALDNER**  
BLUMENFELD NAVIGATOR-ET



**JAY JAUQUET**  
SYNERGY KUDOS-ET



**JOHN CONRAD**  
ESKDALE ZION-P



**JOHNATHAN, JEFF & ADAM KING**  
KINGS-RANSOM C CRUISIN-ET  
KINGS-RANSOM H DREAMY-ET



**KOESTER FAMILY**  
K-STAR AFTERMATH-ET



**RICK ADAMS**  
SUGAR-C CAPTIVATING FABIO



**JOHN AND HOLLY IRVINE FAMILY**  
IR PRIMETIME



**COOKIECUTTER HOLSTEIN & IDEAL DAIRY FARMS TEAM**  
COOKIECUTTER D HELMSMAN-ET "RC"



Learn more about the Holstein Marketplace Sires program by scanning the QR Code.



# Holstein Marketplace SIREs



## 712H001005 CHARISMA DAUGHTERS

**OLMAR CHARISMA BOLOXIE VG-86**

Owned by: Joshua Nelson, Sleepy Eye, MN

**OLMAR CHARISMA COTTONELLE**

Bred & Owned by: Olmar Farms, Sleepy Eye, MN

[www.holsteinusa.com/marketplacesires](http://www.holsteinusa.com/marketplacesires)